

GLUZILLA

**Two-Part
Epoxy Adhesive**



PRODUCT INFORMATION:

Introducing Gluzilla. Our new opaque colored all purpose, two-part epoxy adhesive that is easily dispensed from a standard caulk gun, eliminating the mixing and mess of working with epoxy. Save time and work at your own rate with MAS Epoxies new system that makes epoxy less of a hassle and more of a convenience for your project. Available in 185ml and 450ml cartridges equipped with two static mixers.



Application Tips

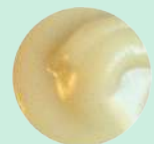
Adhesive: All types of Metal, Glass, Brick, Stone, Fiberglass, Tile and Composites.

Sealant: Oil, Water and Pressure Tanks, Cellar Cracks, Plumbing Leaks and more.

Filler: Holes, Castings, Patterns, Molds, Voids, Welds, Steering Wheels and more.

Two component opaque colored epoxy system easily dispensed from a standard caulk gun.

- Comes with 2 static mixers
- 1 year minimum shelf life



GLUZILLA

The Perfect all around Adhesive, Hundreds of Applications, Easy-to-Use, Translucent Paste Epoxy that comes in a standard Caulk Cartridge

- Fast curing, translucent paste epoxy with unlimited bonding, sealing and filling applications.
- For use by professionals, homeowners and DIY hobbyists.
- Formulated with a viscosity like Vaseline to be extremely versatile, flexible and resilient with enormous strength.
- Easy to work with hand won't drip or sag when used overhead or on vertical surfaces.
- Demonstrates excellent chemical resistance to mild acids, caustics, detergents, gasoline, fuel oil, salt and fresh water.
- After cure, Gluzilla can be painted, drilled, machined, sanded, filed, tapped or cut.



Suggested Uses

As an **Adhesive:** Wood, metal (all types), Glass, Brick, Block, Concrete, Stone, Slate, Fiberglass, Tile and other substances.

As a **Sealant:** Oil, Water and Pressure Tanks, Cellar Cracks, Plumbing Leaks and more.

As a **Filler:** Holes, Castings, Patterns, Molds, Voids, Welds, Steering Wheels and more.

Please note that Gluzilla will not bond to wax paper, Teflon, polyethylene and some other plastics. There are thousands of plastic combinations. When in doubt, test a small area.

Application Tips

Apply Gluzilla in your desired thickness to both prepared surfaces to be bonded and bring them together firmly. Ensure that sample Gluzilla remains between the contact surfaces.

Use screen wire or fiberglass cloth to reinforce large voids or gaps.

To smooth out work, use lacquer thinner or denatured alcohol

Gluzilla mixes better at 80°F than 40°F. In cold or cool temperatures, place container near a heat source, but use caution to heat up slowly and consistently.

Preparation and Mixing Tips

- Clean and prepare the surfaces to be bonded.
- Insert the epoxy cartridge into any caulking gun when ready to use.
- Open the epoxy by removing the collar and nozzle plug.
- To use the static mixer (2 included) remove the collar and nozzle plug. Insert the nozzle into the collar and attach to cartridge. When not using the static mixer, use a small putty knife or flexible artist spatula to mix, apply and sculpt.

PHYSICAL PROPERTIES	Value	Test Method
Color	Buff	Visual
Hardness, Shore D	80	ASTM D2240
Tensile Strength, psi	6,000	ASTM D638
Tensile Modulus, psi	325,000	ASTM D638
Tensile Elongation, %	8.5	ASTM D638
HDT, Post Cured, °F	122	ASTM D648
Compressive Strength, psi	9,000	ASTM D695
Flexural Strength, psi	10,500	ASTM D790
Flexural Modulus, psi	307,000	ASTM D790
Tensile Adhesion, Wood, psi	1,420	ASTM D4541
Tensile Adhesion, Aluminum, psi	1,840	ASTM D4541
Tensile Adhesion, G-10, Laminate, psi	2,090	ASTM D4541

HANDLING PROPERTIES	Value	Test Method
Resin Density at 25°C, lb/gal	9.6	ASTM D1475
Hardener Density at 25°C, lb/gal	8.8	ASTM D1475
Resin Color-A	Buff	Visual
Hardener Color-B	Amber	Visual
Thixotropic Index, 1/10 RPM	7.5	----
Mix Ratio by Weight	100A:46B	Calculated
Mix Ratio by Volume	2A:1B	Calculated
Gel Time at 25°C, 150g mass, min.	30-35	ASTM D2471
Vertical Sag Resistance, in.	1-2	-----

Product	Quantity
Gluzilla (single)	1
Gluzilla (case)	24
Static Mixers (2 pack)	1
Static Mixers (6 pack)	1